



HiTi Photo Printer P525L
User Manual

Contents

Regulatory compliance statements.....	3
Chapter 1. Important safety instruction.....	5
⊙ Safety Instruction	5
⊙ Environments	5
⊙ Handling Instruction	6
⊙ Handling Instruction for Consumable and Printed Outputs	8
Chapter 2. Accessory items	9
⊙ Accessory Item	9
Chapter 3. Basic functions introduction	10
⊙ Appearance	10
⊙ LCD Display	10
Chapter 4. Installing and operation	11
⊙ Installing	11
⊙ Operation Process	12
⊙ Ribbon/Paper Installing	13
⊙ Printer transportation	15
Chapter 5. Operation panel and Printer Status	17
⊙ Operation Panel	17
⊙ User Set Up Mode	18
Chapter 6. Routine Maintenance	19
⊙ Cleaning of Thermal Printing Head and Roller	19
⊙ Cleaning of Outer Cabinet cleaning	20
⊙ Cleaning of Filter	20
Chapter 7. Error Message Handling	21
⊙ Error Message and Corrective Actions	21
⊙ Failure Symptoms	22
⊙ Paper Jam resolution	23
⊙ Power Supply Interrupted During Printing	24
Chapter 8. Specification	25
⊙ Specification	25

Regulatory compliance statements

American Users

FCC Part 15

For a Class A digital device or peripheral, the instructions furnished the user shall include the following or similar statement, placed in a prominent location in the text of the manual.

This equipment has been tested and found to comply with the limits of a Class A digital device, pursuant to Part 15 of the FCC Rules. These limits are designed to provide reasonable protection against harmful interference when the equipment is operated in a commercial environment. This equipment generates, uses, and can radiate radio frequency energy and, if not installed and used in accordance with the instruction manual, may cause harmful interference to radio communications. Operation of the equipment in a residential area is likely to cause harmful interference in which case the user will be required to correct the interference at his (or her own) expense.

FCC ID: W5388D2035001

Europe Users

Class A ITE is a category of all other ITE which satisfies the class A ITE limits but not the class B ITE limits. Such equipment should not be restricted in its sale but the following warning shall be included in the instructions for use.

Warning

This is a class A product. In a domestic environment this product may cause radio interference in which case the user may be required to take adequate measurement.

European Union Regulatory Notice

The device bearing the CE marking is in compliance with the essential requirements and other relevant provisions of Directive 1999/5/EC. This device complies with the following harmonized European standards.

Health: EN 62311:2008

Safety: EN 60950-1:2006 + A1: 2010 + A11:2009 + A12:2011

EMC: EN301 489-1 v1.9.2:2011, EN301 489-3 v1.6.1:2013

Radio: EN302 291-1-2: V1.1.1:2005

Federal Communications Commission (FCC) Statement

You are cautioned that changes or modifications not expressly approved by the part responsible for compliance could void the user's authority to operate the equipment.

This device complies with Part 15 of the FCC Rules. Operation is subject to the following two conditions:

- 1) this device may not cause harmful interference and
- 2) this device must accept any interference received, including interference that may cause undesired operation of the device.

Chapter 1. Important safety instruction

◎ Safety Instruction

This manual provides detail instructions for the safety use of the printer.

Please read this manual carefully before operating the printer to ensure having proper use.

- ◆ In this manual, there are notes that require special attention. For your safety operation, Safety Notices are separated as follows:



: Inappropriate handing can cause the death or serious wounds.



: Inappropriate handling can cause wounds and/or physical damage to the users.

- * Attention: Explanation about the cause of the trouble and the environmental condition.

- ◆ It is difficult to forecast all the danger in setting and use of the printer.

Therefore, warnings in this Operation Manual, in the other documents on the printer cannot cover all the cases. In case of performing the operation or maintenance which is not described in this manual, all the concern for the safety have to be taken care at the customer side.

- ◆ Operation and the notification for the maintenance described in this manual and other documents are for the proper use of the printer.

In case of using the printer for the other purpose, all the concern for the safety has to be taken care at the customer side.

- ◆ Do Not perform the operation which is prohibited in this manual and other documents.

◎ Environments

To use the printer safety, please pay attention to followings:



: Do not let kids to touch the printer or the cables. It can cause accidents or electric shock



: Do not place the printer under a humid or dusty place. It can cause a fire, electric shock or printer problem. Do not place the printer with dust, sand and high humidity such as bathing place, bathroom, hot spring or the street.



: Do not place the printer on rickety place and/or inclined place. Printer may fall down or tumble and it can cause serious injury.

- * Attention: Keep the printer out of direct sunlight
- * Do not put metallic objects or case/cup with any liquid on top of the printer. Water spilt on metallic items fall into the printer may cause the fire and electric shock. In case the water spilt or metallic items fall into the printer, please turn off the printer power immediately.



: Do not block the openings of the printer. In case, the opening blocked, the heat will remain inside and it can cause the fire.



: Do not insert or fall the metallic or flammable items into the printer through the openings of the printer, it can cause the fire or electric shock.

© Handling Instruction

When handling the printer, please pay attention to the followings:



: Lift the printer from its box and put it onto a flat and firm table or desk.



: The printer alone (without paper and ribbon installed) is weighted around 18Kgs. Please handle the printer carefully to prevent personal injury and damage of the printer.



: When moving the printer, hold the bottom edge of the printer. It is strongly recommended to handle the printer by one to two persons during the transportation.



: Please take caution when transporting the printer on the slippery floor.



: Please make sure the power is off and the power cord is removed from the printer before transportation.



: In the cause of dropping the printer during transportation, contact HiTi dealers or service center for inspection of the printer. Using the printer with possible damage without proper inspection may cause fire or electric shock.

- * Do not dismantle or remodel the printer. Some sections of the printer contain a high voltage or become very hot. Ignoring this warning may cause electric shock, fire, or burns.



: Secure the power cable firmly while using.



: The thermal head reached high temperature during operation but it is normal. Do not touch the thermal head by any case. Touch the thermal head may cause person injury or damage of the printer.

- * Attention: Touching the surface of the thermal head directly may cause damage to the thermal heat. Hard objects getting into the printer may cause the damage of printer or result in malfunction. In such case, please do not use the printer while any obstacle inside the printer.



: Do not attempt to service the printer beyond the instruction specified in this document. In case of irrecoverable problem, please contact HiTi dealers or service center.



: This product must be grounded at all time during operation, and always used with the specified power cable only or the power cable accompanying this product. If the product is used without grounding, and current leakage occurs, fire or electrical shock may occur, and may also cause interference to radio, TV, and other similar electric appliances signal receiving. If the proper ground is not available, please contact HiTi dealers or service center.

◎ **Handling Instruction for Consumable and Printed Outputs**

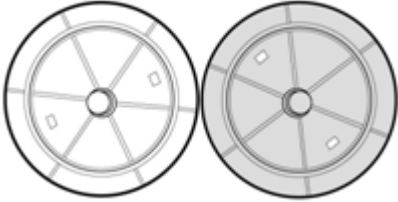
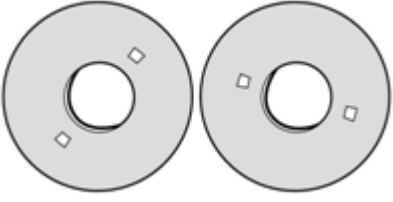
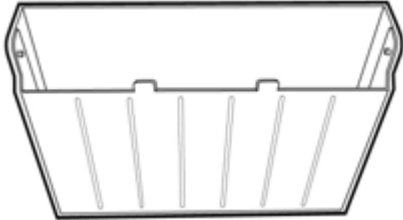
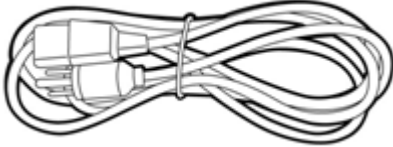
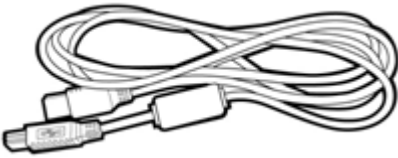

In handling the ink ribbon, paper and printed outputs, please pay attention to the followings:

- * Attention: Paper handling
 - ✓ Use only the paper specified by HiTi
 - ✓ Store the paper flat
 - ✓ Store the paper in a dry and dark place to avoid the direct sunlight (Temperatures less than 30°C; Humidity less than 60%)
- * Attention: Ink ribbon handling
 - ✓ Use only the ribbon specified by HiTi
 - ✓ Store the ink ribbon in cool place to avoid direct sunlight (Temperatures less than 30°C; Humidity less than 60%)
- * Attention: Printed output handling
 - ✓ Store the printed outputs in a cool place to avoid direct sunlight
 - ✓ Store the printed outputs away from the organic solvent/fluid such as benzene, thinner or alcohol which may change or deteriorate the colors
- * Attention: Do not print 5 inch photo (5" x 7") or 6 inch photo (4" x 6" or 6" x 8") in one printer.

Chapter 2. Accessory items

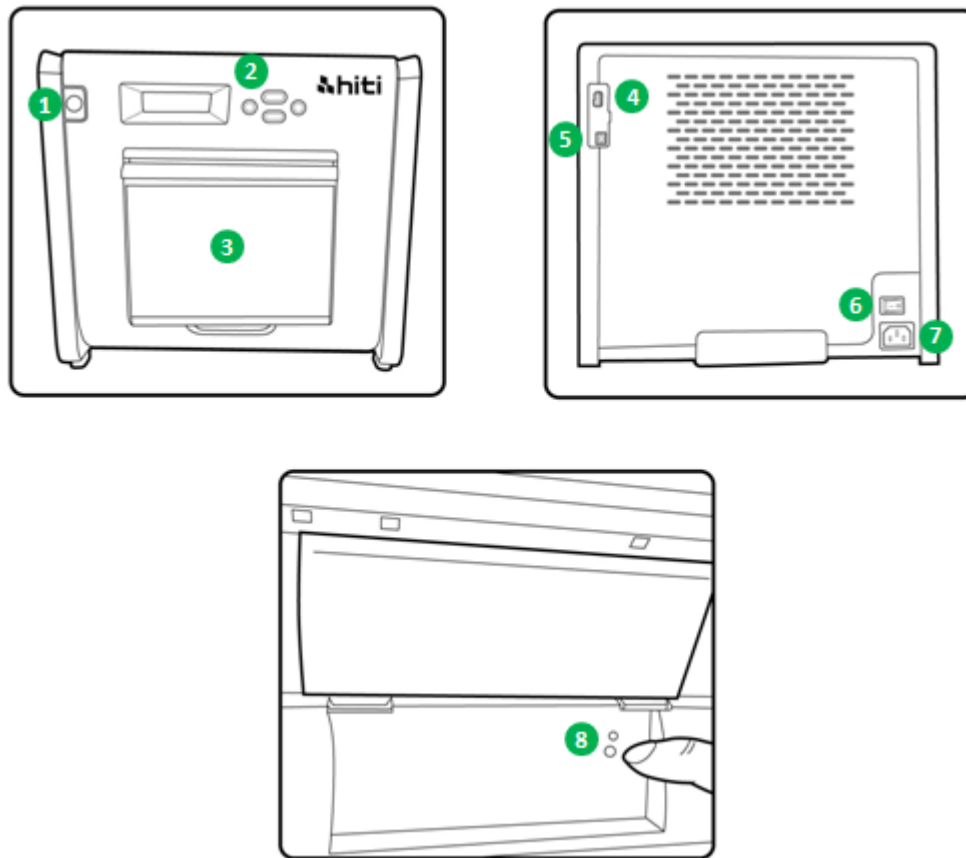
Before using the printer, please make sure the Chapter 1. Important Safety Instruction is fully-acknowledged carefully.

◎ Accessory Item

<p>Paper Flange</p> 	<p>Adapter/Spacer</p> 
<p>Scrape Bin</p> 	<p>Power Cord</p> 
<p>USB Cable</p> 	<p>Warranty Card</p> 

Chapter 3. Basic functions introduction

◎ Appearance



◎ LCD Display

No.	Name	Function
①	Door	Press the button to open the front door
②	Control panel	Four hard-key and one mono LCM to control and monitor the condition of the printer
③	Scrap receptacle	Clean it up periodically before full of scraps in the receptacle
④	USB slot (Type A)	Connect with designated device of HiTi products. Do not charge with hand-held devices.
⑤	USB Slot (Type B)	To be connected with PC for transferring data
⑥	Power Switch	Switch "On" to operate, and switch "Off" when finishing using the printer. Do not switch off the printer while the printer is still running.
⑦	Power slot	To be connected with AC power (110V~240V)
⑧	Paper sensor	Place the paper core properly and stretch the paper to designated position until the sensor lights

Chapter 4. Installing and operation

Connect the power cord which is conformed to safety regulations below.

© Installing



4.1 Connect the printer power cord to the AC IN slot



: Make sure to switch off the power of the printer before connecting to AC power.



: Do not insert or remove the power cord with wet hands. It may cause the electric leakage.



: Do not damage or make any modification to the power cord. Misusing, such as putting the heavy items on the power cord, giving a strong pull to the power cord and twist the power cord may cause the fire and electric shock.



: When moving the printer, make sure to switch off the power of the printer, remove the power cord in order to have no connection with other devices. Otherwise, the power cord might be damages and it can cause the fire and electric shock. Also, it is very likely to fall down caught by the cord.



: For the safety consideration, please remove the power cord from the printer and AC power if the printer is not to be used for a long time.



: Please avoid piling up which may cause the fire and electric shock.

Connect the USB cable with printer and PC/laptop for further operation.



4.2 Use USB cable to connect printer and PC



: Before removing the USB cable, please make sure the printer is finished its internal operations.



: Removing the USB cable while data transferring printer may not be able to print data correctly and it may cause waste.

© Operation Process



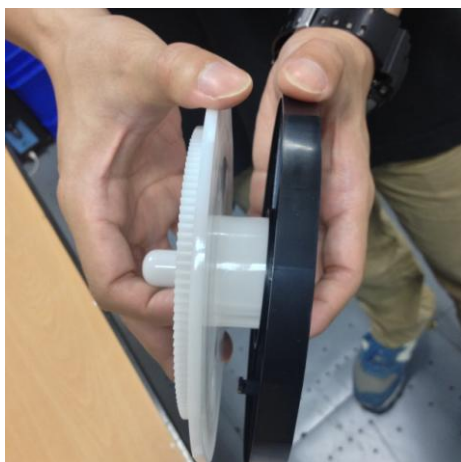
4.3 Powering up the printer. As printing is in running, do not power off the printer.




4.4 Opening the front cover to install ribbon and paper. Please reserve some space for front cover opening up.

◎ **Ribbon/Paper Installing**

Install paper adapters in the paper flange first while using 5x7 paper size. However, the paper adapters are not necessary while printing 4x6 or 6x8 paper size.



* **Accessory item:**  => Paper adapter x 2 (Install with Paper flange)

Please install each one of paper flange and paper adapter which is for 5 inch paper core used.



Do not print 5x7 size and 4x6 or 6x8 in one photo printer, because it would generate dust and pollutions which are not able to be cleaned by users.



4.5.1 Loading paper instructions

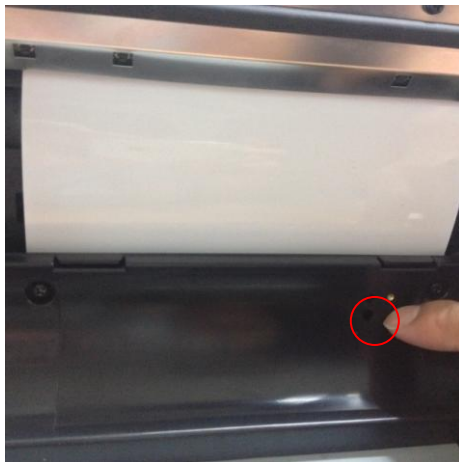
Place the paper flange in right positions.

* Attention: Installing the print kit to the printer can be hassle-free. Please read the manual carefully before working on the printing..



4.5.2 Pushing the paper to designated position

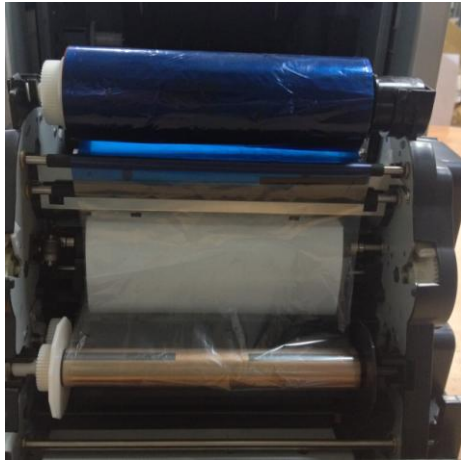
* Attention: To install the paper to position specified correctly, please make sure the leading edge of paper is inserted in at an oblique angle.



4.5.3 Paper sensor indicator

Make sure the sensor turns to blue to identify the paper is placed in right position.

* Attention: Do not place paper with strong force because it may cause damage to the paper.



4.6 Loading ribbon

* Attention: It is a mistake-proofing for users; Please be sure the white head locates on white indentation and black head locates on black indentation.



4.7 Closing front cover and 4 sheets of paper will be cut without printing automatically to ensure the paper quality.



4.8 Loading scrap receptacle:

Clean it up periodically before full of scraps

◎ **Printer transportation**

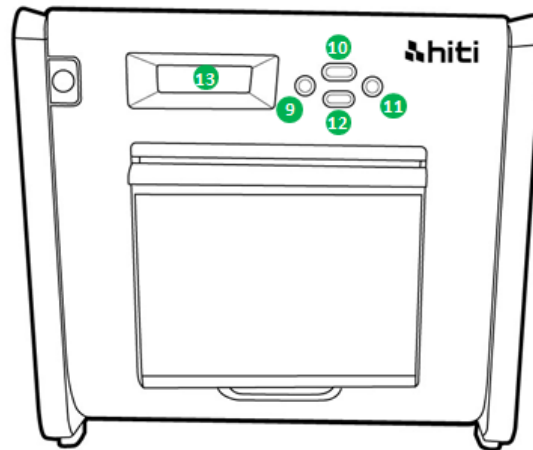
The following cautions are necessary in transportation of the printer. Since an incorrect transportation method causes a printer fault, please follow the correct method.

1. Remove the ribbon and paper from the printer before transporting the printer. If the ribbon or paper cannot be removed due to a fault, consult with the HiTi dealers or service center.

2. Do not switch off the power while the front cover is open. Close the front cover while the power is ON and switch off the power when “Ribbon Missing” is displayed on the LCD of the operation panel.

Chapter 5. Operation panel and Printer Status

◎ Operation Panel

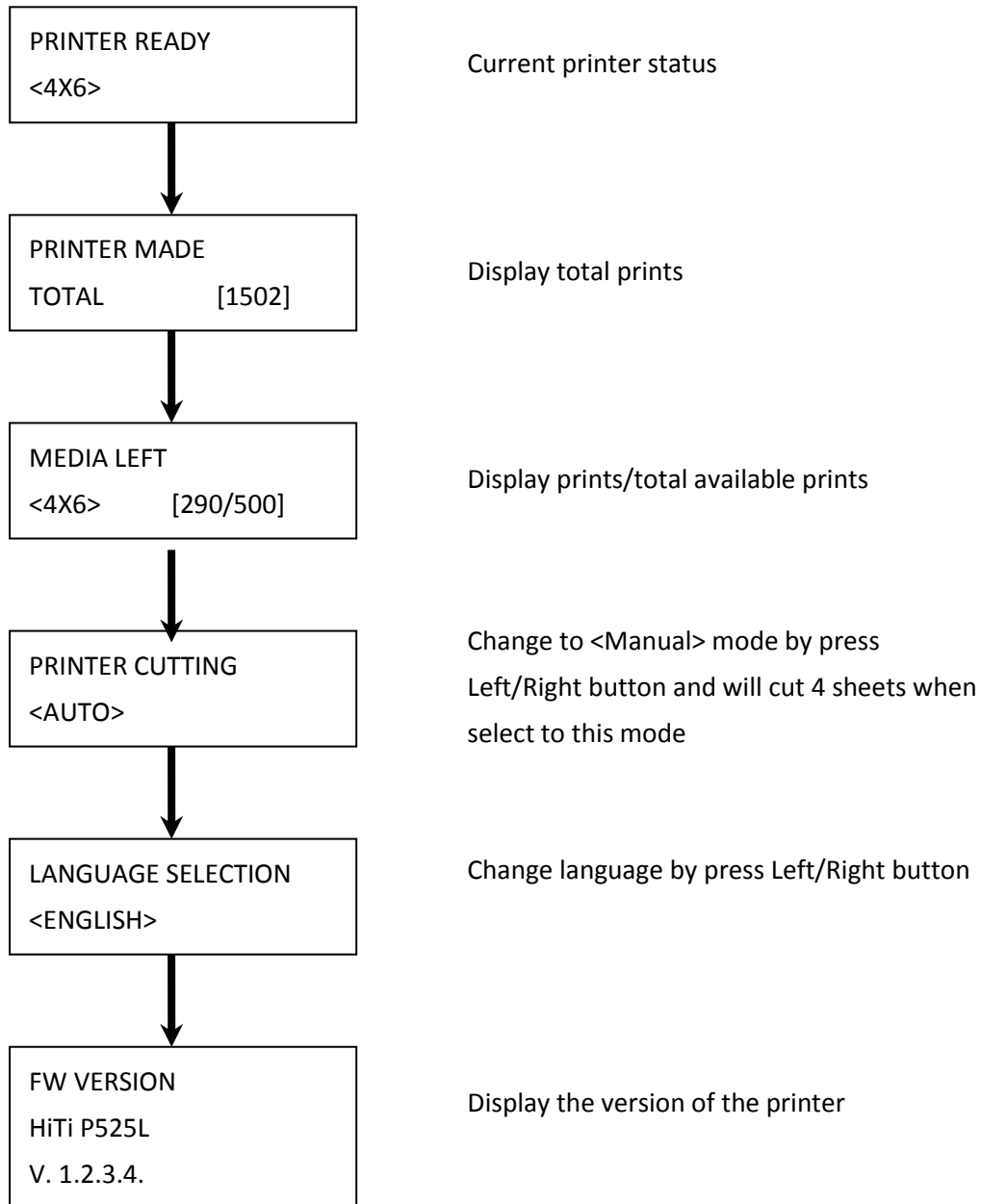


No.	Name	Function
⑨	Left button	Use this button to select preferred setting
⑩	Manu button	Use this button to view the printer status
⑪	Right button	Use this button to select preferred setting
⑫	EXEC button	Use this button execute cutting paper
⑬	LCD Display	See as below table

LCD display	Description
Printer Ready	Printer is ready to operate.
Prints Made	Display prints made
Media left	Display media left quantity
Paper cutting	Execute paper cutting (6x4 paper x 4 sheets) when close front door
FW version	Current firmware version
Language Selection	Select preferred language
Initializing	Printer is in initialization
Media checking	Checking Ribbon/Paper status
Data Sending	Send data from PC/laptop
System cooling	The thermal head is being cooled down. Printing is interrupted temporarily until the thermal head is cooled down
System warm up	The thermal head is being warmed up. Printing is interrupted temporarily until the thermal head is warmed up

◎ **User Set Up Mode**

To set the user set up mode, press the “Menu” button in standby mode. When the “Menu” button is being pressed, display changes as follows.



Chapter 6. Routine Maintenance

◎ Cleaning of Thermal Printing Head and Roller

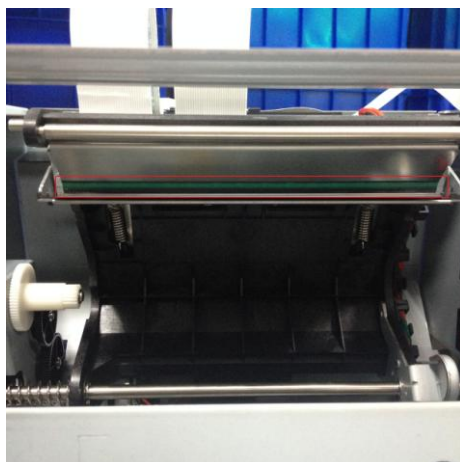
By using thermal transfer technology, daily maintenance is not necessary if the printer has been using properly. However, in order to keep the best print quality, it is highly recommended to clean Thermal Printing Head and Roller once a month.



: Make sure that the power is switched off before cleaning. Thermal Printing

Head reaches high temperature right after printing. Do not touch by hands directly. Make sure the Thermal Printing Head has been sufficiently cooled down before start cleaning.

When fingerprint stick to the heating element, it can damage the Thermal Printing Head. Be careful not to be hurt by the projections of the printer.



6.1 Use Gauze: Clean the heating element (glass bar) of the Thermal Printing Head with ethyl alcohol



6.2 Use Gauze: Clean the roller (black parts) with ethyl alcohol.



: Please wait 5 minutes until the gauze dried up completely

◎ **Cleaning of Outer Cabinet cleaning**

Wipe the printer with a soft cloth. If the stains are not removed, wet the cloth and apply weakened neutral Detergent to it.



: In case of foreign substance get into the printer, please switch off the printer, remove the power cord and contact with dealers or service center for further help. Continuous use of the printer under such condition can cause the fire and electric shock.



: Continuous use under the abnormal condition such as high temperature, smoke and strange smell can cause the fire and electric shock. Please switch off the printer, remove the power cord and contact with dealers or service center for further help.



: Do not use volatile solvents or spray insecticide on the printer outer cabinet.

Otherwise, discoloration or crack may result.

◎ **Cleaning of Filter**

If the dust collects on the openings, please clean it with vacuum cleaner.

Chapter 7. Error Message Handling

◎ Error Message and Corrective Actions

LCD Message	Status	Corrective Action
0100 Cover Open	The front cover is opened	Close the front cover
0101 Cover Open fail	The front cover is not opened	Press the button ① again to reset
0200 IC chip missing	No RFID key	Make sure the RFID tag attached on the cover of spool
0201 Ribbon Missing	No Ribbon detected	Load the ribbon spool
0202 Ribbon Mismatch	Installed ribbon does not match RFID tag	Replace the right RFID tag and adhere to ribbon spool
0203 Security Check fail	Unsupported ribbon type	Replace to the right ribbon
0300 Ribbon Out	The ribbon is empty	Replace the ribbon
0400 Paper Out	Paper is not loaded	Load the paper roll
0401 Paper Out	The paper is empty	Replace the paper roll
0402 Paper Not Ready	Paper roll is installed incorrectly	Reload the paper roll in right direction
0500 Paper Jam	Paper jammed while printing	Remove jammed paper
0600 Paper Mismatch	Loaded paper roll size is not match to ribbon	Replace the right paper roll size

◎ **Failure Symptoms**

When detecting a failure symptom, check the printer regarding the following table.

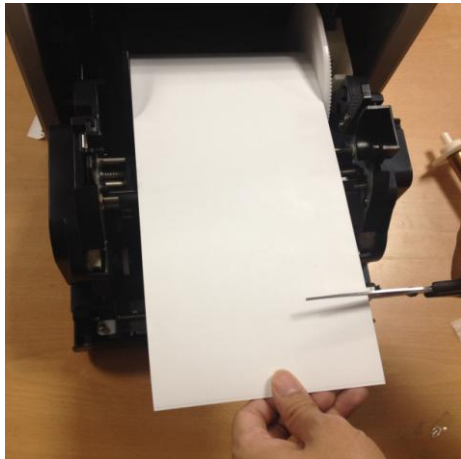
Symptom	Action
Power is not switch on	<ul style="list-style-type: none">● Please check if the power cable is firmly connected
The personal computer does not recognize the printer	Check if the USB cable is connected to the personal computer or printer
The printer does not ready	<ul style="list-style-type: none">● Check if the front cover is properly closed● Check if paper is jammed in the printer● When the paper setting lamp goes off, insert the edge of the paper until the paper setting lamp is lit
The front cover does not open	<ul style="list-style-type: none">● Check if the printer is installed in a flat surface● Please check if there is hindrance for opening the front door
A straight stripe area is not printed	<ul style="list-style-type: none">● The Thermal Printing Head may be dirty, clean it up as Chapter 6. "Routine Maintenance" instructs● If the blank area remains after cleaning Thermal Printing Head, it may be caused by loosening of Thermal Printing Head. Please consult HiTi dealers or service center
Dotted areas are not printed	<ul style="list-style-type: none">● The roller may be dirty. Clean the roller as Chapter 6. "Routine Maintenance" instructs

◎ Paper Jam resolution



7.1

Open the front cover



7.2

Cut off the folded paper or printed section by scissors. When the paper is folded inside of the printer, pull it out gently and slowly.



7.3

Pull out the paper until the paper sensor indicator goes off.

- * Attention: If the paper is used without cutting off the folded or printer section, paper jam occurs every time or the ribbon may snap during printing. Always cut off the creased or printed section of the paper.
- * Attention: Cut off the paper straight and at right angles to the roll paper direction
- * Attention: If paper jam occurs frequently, a defect in the mechanical section is assumed. Consult with HiTi dealers or service center.

◎ **Power Supply Interrupted During Printing**

In the course of printing, in case of unexpected power interruption, please must always repower on the printer to reset. Leaving this situation for a long time, the shape of Platen can be warped. In order to avoid this situation, please follow the instruction below.

1. Switch off the power of the printer
2. Always await 3 or more seconds for power on and off.
3. Paper jam is displayed on the LCD of the operation panel, open the front cover and take the necessary actions according to the “Paper Jam” topics instructs.



7.4

Stick the broken part of ribbon with a tape.



7.5

Turn the ribbon on the rewinding side and rewind the tapped section completely and tightly.

Chapter 8. Specification

◎ **Specification**

Model Name	HiTi P525L
Printing Method	Dye Sublimation
Resolution	300dpi
Printing Size & Capacity	4" x 6" (102 x 152mm): 500 prints 5" x 7" (127 x 177mm): 290 prints 6" x 8" (152 x 203mm): 250 Prints
Printing speed	4" x 6" approximately: < 15 seconds 5" x 7" approximately: < 19 seconds 6" x 8" approximately: < 21 seconds
Operation System	Windows XP/Vista/Win7/Win8 ; Mac OS 10.6 or above
PC Connection	USB 2.0 High Speed
Power Requirement	AC 100V ~ 240V , 50/60 Hz, 4A
Operation Environment	10°C ~ 35°C (50°F ~ 95°F) ; 20~90% non-condensing
Dimension	327mm x 300mm x 359mm (W x H x D)
Weight	18Kg (consumable and packing materials excluded)

Note: Specification is subject to change without prior notice